

SOKKIA Link

Data Link Software for SOKKIA Products



What is SOKKIA Link?

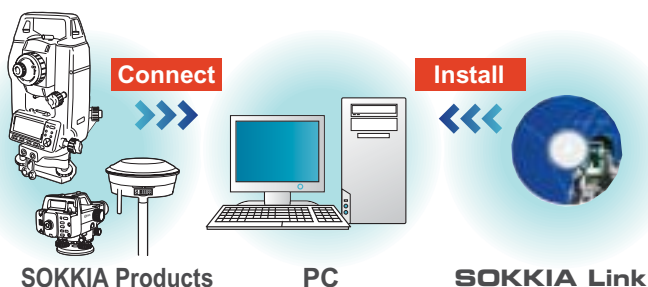
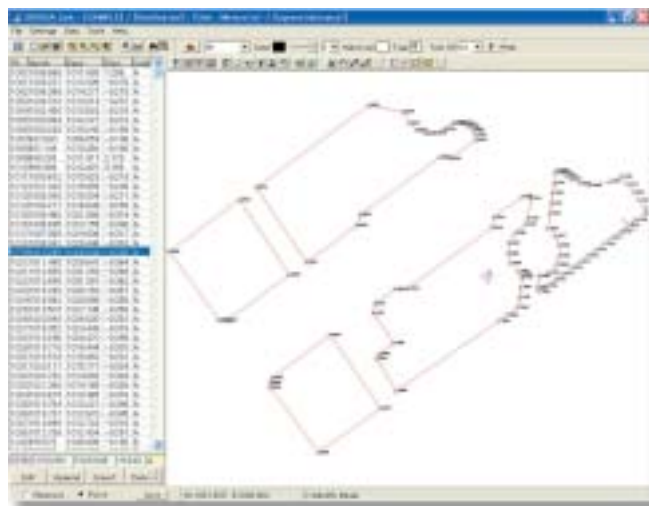
SOKKIA Link is easy-to-use data link software*. It is distributed to customers upon purchase of a current SOKKIA total station. Install SOKKIA Link on your PC and connect with your SOKKIA products. SOKKIA Link will make your SOKKIA products more useful, more efficient, and more functional. In addition to transferring survey data to and from SOKKIA products, data editing and drawing are possible. This software is a global solution that was developed based on requests from users all over the world. SOKKIA Link's multiple functionality will provide added value to your SOKKIA Total Stations, digital levels and GPS**.

*English version.

**RTK data only.

Graphical User Interface

Plot and link data visually. A graphical user interface aids in understanding the relationship between points visually and allows quick confirmation. Editing data is easy using the data table display. Freely add, change and delete values. SOKKIA Link provides distance, intersection and area calculation functions that are familiar to some total stations. What's more, smooth and confident operation is assured by selecting points and checking the results graphically.

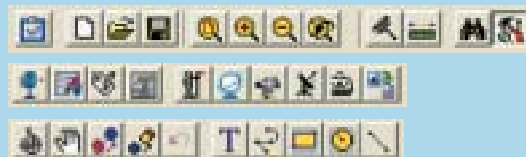


Features

- Graphical User Interface
- Easy-to-handle Data
- Real Time Measurement
- Seamless Connection with CAD Systems
- Can be Used with a Wide Variety of SOKKIA Instruments

Special Features!

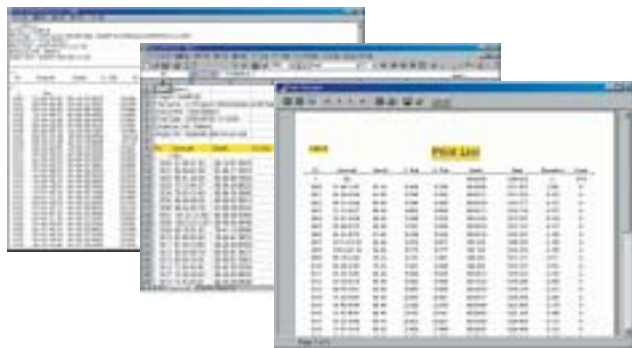
- Using the code list editor, you can change the color, add lines and symbols to create an easy to understand drawing.
- Intuitive icons further improve operational efficiency.





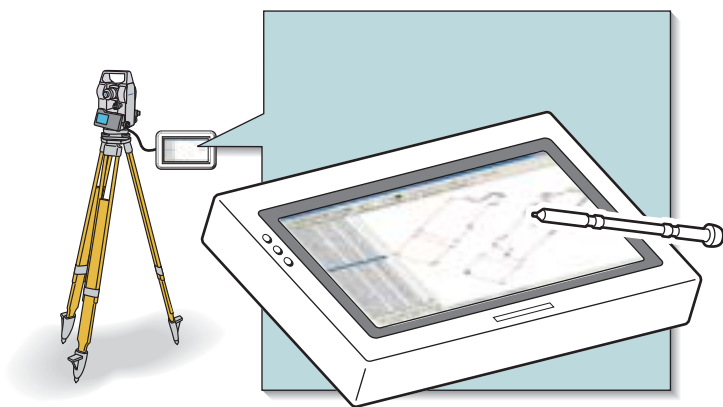
■ Easy-to-handle Data

SOKKIA Link offers multiple data handling options for increased usability. Print out is available for use in a non-PC environment. Data can also be exported in popular XLS and TXT file formats for a broader range of editing possibilities and for those not familiar with the SOKKIA Link software.



■ Real Time Measurement

Perform a Plane-Table Survey using a SOKKIA Link installed PC in conjunction with your SOKKIA total station in the field using SOKKIA Link as a controller. This allows the user to focus on surveying instead of operating the total station's application. Measurement can be performed without touching the total station by just clicking a button on the display.



■ Seamless Connection with CAD Systems

SOKKIA Link supports standard CAD format DXF files. Data collected using SOKKIA products can be used directly with CAD systems. Data compiled using CAD systems can also be used with SOKKIA Link.

■ Can be Used with a Wide Variety of SOKKIA Instruments

SOKKIA Link can be used in conjunction with current SOKKIA total stations, digital levels and data collector software. Data collector software also allows you to make use of GPS-RTK.

SOKKIA Link provides a stable platform making surveys using multiple instruments a snap. Let SOKKIA Link expand your surveying possibilities.

Hardware Requirements

CPU	166MHz or higher Pentium-compatible CPU
Memory	At least 128 MB of RAM (More memory generally improves responsiveness)
Hard Disk	2GB with 650 MB free space
Drive	CD-ROM or DVD drive
Display	VGA or higher resolution monitor
Display resolution	Higher 1024 x 768
Ports	One Serial port or USB port
OS	SOKKIA Link recommends Windows XP

CAD Requirements

Format	DXF
DXF Version	All version are able to be read. (Recommend release 12)

Interface Cable Requirements

SET series	DOC27 (PC D-sub 9pins, male)
SRX series	DOC129 (PC D-sub 9pins, male)