

# SOKKIA

# GSRNetLink

GNSS Data Transmission Software



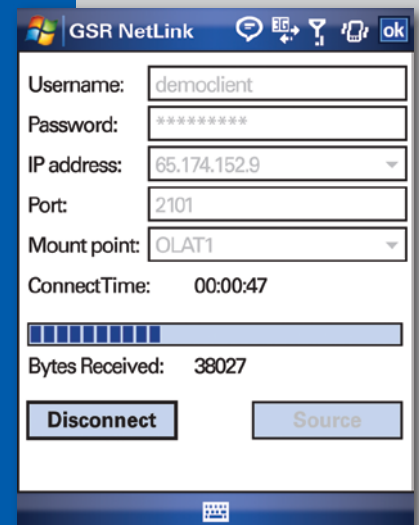
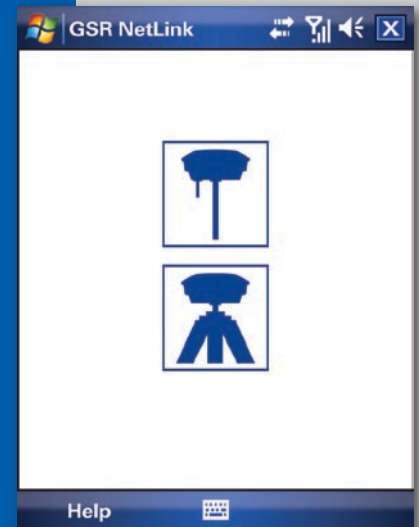
## Reference Station transmissions with Windows Mobile® flexibility

Have a SOKKIA GNSS receiver and want to quickly add reference network corrections? With SOKKIA GSR NetLink, you can easily access GNSS correction data streams using a Windows Mobile® Pocket PC phone.

Combine GSR NetLink with your SOKKIA GNSS receiver — even one containing an internal UHF radio — and you instantly add the flexibility to connect to reference networks. GSR NetLink provides a completely wireless solution when paired with the dual-*Bluetooth*® capable GSR2700 ISX.

## GSR NetLink Features

- Connect to NTRIP and direct TCP/IP correction streams and transmit them wirelessly to SOKKIA GNSS receivers via *Bluetooth* link
- Connect to any GNSS Reference Network for accurate and reliable RTK positioning
- Supports duplex communications with GNSS Reference Networks requiring the end users position (NMEA string)
- Setup SOKKIA Mobile Reference Stations to create on-the-fly RTK coverage support for GNSS rovers
- Easy-to-use, touch screen interface
- Gives you the freedom to work with CDMA or GSM based mobile technologies
- Supports Windows Mobile® 5 and 6 Pocket PC phones



# GSR NetLink Specifications

Required		
Operating System	Windows Mobile® Professional 5 or 6 - Pocket PC Phone <sup>1,2</sup>	
Display resolution	320 x 240 pixels (must be touchscreen)	
Network	GSM or CDMA	1. Windows Mobile® 2003 for Pocket PC Windows Mobile® 2003 for Pocket PC Phone Edition Windows Mobile® 2003 SE for Pocket PC Windows Mobile® 2003 SE for Pocket PC Phone Edition Windows Mobile® 5.0 for Pocket PC Phone Edition Windows Mobile® 5.0 for Pocket PC Phone Edition Windows Mobile® 6.0 Classic Windows Mobile® 6.0 Professional 2. <b>Phone not included</b>
I/O Interface	Bluetooth® v2.0	
Processor	Arm v4 or compatible	

## GSR NetLink Workflow



**THE SOKKIA DIFFERENCE** – SOKKIA has been developing advanced products for surveying professionals around the world since 1920. We are very proud of our **heritage**. It is our mission to provide you with products of the highest **quality** so you can do the job right the first time – every time. And we **support** our products long after the sale is complete. With that kind of **value**, it is no wonder surveyors everywhere count on SOKKIA for their most important projects.

## SOKKIA Worldwide

**SOKKIA CO., LTD.** Head Office, Japan Phone +81-46-248-7984 www.sokkia.co.jp ISO9001 Certified (JQA-0557)  
**SOKKIA CORPORATION** Head Office U.S.A. Phone +1-800-255-3913 www.sokkia.com  
**SOKKIA CORPORATION** Head Office Canada Phone +1-905-238-5810 www.sokkiacanada.com  
**SOKKIA LATIN AMERICA** Head Office Latin America Phone +1-305-599-4701 www.sokkialatinamerica.com  
**SOKKIA PTY. LTD.** Head Office Australia, New Zealand and South Pacific Phone +61-2-9638-2400 www.sokkia.com.au  
**SOKKIA B.V.** Head Office Europe & other CIS countries Phone +31-(0)36-5496000 www.sokkia.net  
**SOKKIA KOREA CO., LTD.** Head Office Republic of Korea Phone +82-2-514-0491 www.sokkia.co.kr  
**SOKKIA SINGAPORE PTE. LTD.** Head Office South & Southeast Asia, Middle East, and Africa Phone +65-6479-3966 www.sokkia.com.sg  
**SOKKIA SURVEYING INSTRUMENTS TRADING (SHANGHAI) CO., LTD.** Shanghai Office, People's Republic of China Phone +86-21-63541844 www.sokkia.com.cn  
**SOKKIA CO., LTD.** Beijing Representative Office, People's Republic of China Phone +86-10-65056066 www.sokkia.com.cn

Your Authorized SOKKIA Distributor Is: